

Window Headers



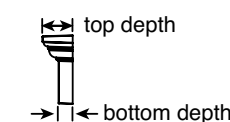
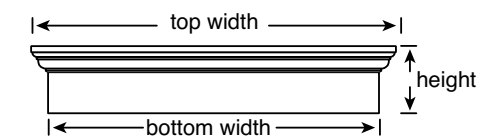
6" Window Headers

9 Colors 001, 002, 008, 023, 028, 034, 078, 117, 123 and paintable (030). Ask about other colors that are available with a 25 unit minimum.
 Profiles Flat Panel or Classic Dentil
 Installation Surface mount on any surface including wood, vinyl, fiber cement, aluminum, stucco, brick and hardboard.

6" STANDARD HEADERS

	ITEM #	top width	bottom width	top depth	bottom depth	height
33 $\frac{3}{8}$ " Flat Panel	00 82 0633 ***	36 $\frac{1}{2}$ "	33 $\frac{3}{8}$ "	2 $\frac{1}{16}$ "	1 $\frac{1}{4}$ "	6"
33 $\frac{3}{8}$ " Classic Dentil	00 81 0633 ***	36 $\frac{1}{2}$ "	33 $\frac{3}{8}$ "	2 $\frac{1}{16}$ "	1 $\frac{1}{4}$ "	6"
33 $\frac{3}{8}$ " J-Channel Back-Plate	00 83 0633 ***					
37 $\frac{3}{8}$ " Flat Panel	00 82 0637 ***	40 $\frac{1}{2}$ "	37 $\frac{3}{8}$ "	2 $\frac{1}{16}$ "	1 $\frac{1}{4}$ "	6"
37 $\frac{3}{8}$ " Classic Dentil	00 81 0637 ***	40 $\frac{1}{2}$ "	37 $\frac{3}{8}$ "	2 $\frac{1}{16}$ "	1 $\frac{1}{4}$ "	6"
37 $\frac{3}{8}$ " J-Channel Back-Plate	00 83 0637 ***					
43 $\frac{3}{8}$ " Flat Panel	00 82 0643 ***	46 $\frac{1}{2}$ "	43 $\frac{3}{8}$ "	2 $\frac{1}{16}$ "	1 $\frac{1}{4}$ "	6"
43 $\frac{3}{8}$ " Classic Dentil	00 81 0643 ***	46 $\frac{1}{2}$ "	43 $\frac{3}{8}$ "	2 $\frac{1}{16}$ "	1 $\frac{1}{4}$ "	6"
43 $\frac{3}{8}$ " J-Channel Back-Plate	00 83 0643 ***					
65 $\frac{3}{8}$ " Flat Panel	00 82 0665 ***	68 $\frac{1}{2}$ "	65 $\frac{3}{8}$ "	2 $\frac{1}{16}$ "	1 $\frac{1}{4}$ "	6"
65 $\frac{3}{8}$ " Classic Dentil	00 81 0665 ***	68 $\frac{1}{2}$ "	65 $\frac{3}{8}$ "	2 $\frac{1}{16}$ "	1 $\frac{1}{4}$ "	6"
65 $\frac{3}{8}$ " J-Channel Back-Plate	00 83 0665 ***					
73 $\frac{3}{8}$ " Flat Panel	00 82 0673 ***	76 $\frac{1}{2}$ "	73 $\frac{3}{8}$ "	2 $\frac{1}{16}$ "	1 $\frac{1}{4}$ "	6"
73 $\frac{3}{8}$ " Classic Dentil	00 81 0673 ***	76 $\frac{1}{2}$ "	73 $\frac{3}{8}$ "	2 $\frac{1}{16}$ "	1 $\frac{1}{4}$ "	6"
73 $\frac{3}{8}$ " J-Channel Back-Plate	00 83 0673 ***					

- Flat Panel and Classic Dentil Profiles
- Solid, one-piece construction.
- Keystone shipped with the header for optional application.
- Can be cut in center for special sizing in the field. Keystone would be used to cover the cut.
- J-Channel Back-Plate provides a flat mounting surface for headers.

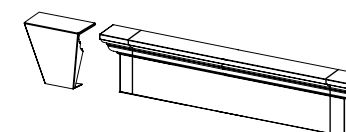


6" CUSTOM CUT HEADERS

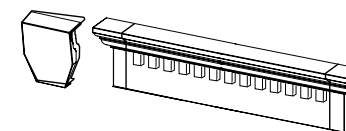
- 6" Classic Dentil or Flat Panel profile headers are available in 1/4" increments from 24" - 144".
- Custom Cut Headers are non-returnable.

CUT AT THE ENDS WITH END CAPS WELDED IN PLACE.

Keystones included for optional installation.



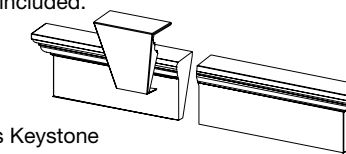
6" Flat Panel, welded-on End Caps
 Available in 1/4" increments from **24" - 73"**



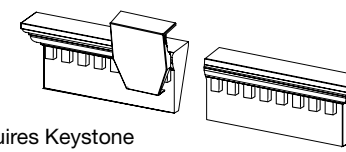
6" Classic Dentil, welded-on End Caps
 Available in 1/4" increments from **24" - 73"**

CUT IN CENTER, NOT WELDED.

Requires use of Keystone which is included.



6" Flat Panel, cut in center, requires Keystone
 Available in 1/4" increments from **24" - 144"**



6" Classic Dentil, cut in center, requires Keystone
 Available in 1/4" increments from **24" - 144"**

J-Channel Back-Plate for Headers and Pilasters

- Provides a flat mounting surface for headers and pilasters.
- Built-in J-channel helps prevent water penetration.
- Can be ordered in all standard and custom header sizes.
- Pilaster Back-Plate is 96" in length and can be cut to desired size. (see page 21)
- Back-Plate must be ordered and shipped separately.
- Note J-Channel Back-Plates available in white (001) and paintable (030) only.

