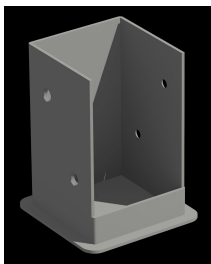


# ASSEMBLY INSTRUCTIONS

## Bolt Down Bracket System (4) (Includes Hardware)

**Eden™**

Enduring Garden Architecture  
[www.edenarbors.com](http://www.edenarbors.com)



Designed to be used to mount any New England Arbor or Eden product with 5x5 posts (pergolas and arbors).

**If you are installing a Venetian or Bellagio Pergola Kit, please see page 8 of their corresponding instruction manuals for assembly instructions with the Bolt Down Bracket System and disregard these instructions.**

*Please read through before starting assembly.*

### Check Box for These Contents

In the event of missing or defective parts please call our customer service dept. at **1 800 282 9346, ext #20** (Mon. to Fri. 8:00 AM to 4:00 PM EST).

1. Steel Post Bracket (4)
2. 1/4" x 2 3/4" Concrete Screws (28)
3. 5/32" Concrete Drill Bit (1)
4. Drill Bit for Cordless Drill (1)

### Extra Materials Required

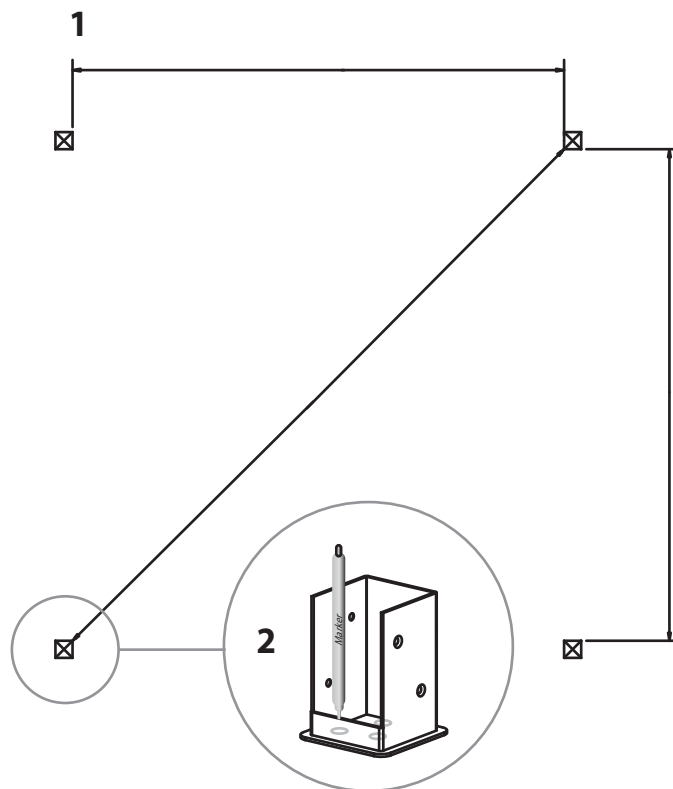
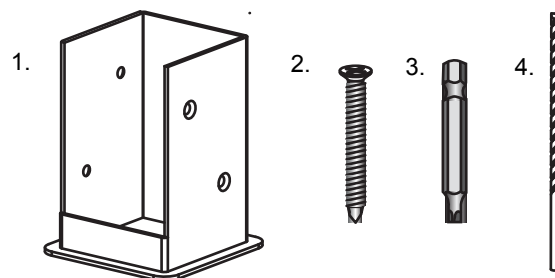
- 4x4x4' pressure treated wood posts if using for a pergola (4) OR
- 4x4x ? pressure treated wood posts if using for an arbor (4)  
(length depends on arbor)
- 1/2"x4"x12" long wood shims to "build out" posts (16)

### Tools You Will Need

- Cordless Drill
- Concrete Hammer Drill (if drilling in concrete)

### Warning:

*If you are installing a pergola on a wood deck or concrete surface, it is highly recommended that you purchase this product.*



**1**

Measure and mark out the location of the pergola or arbor posts using string or chalk line. Diagonal distances must be the same to ensure a square installation. Adjust string lines accordingly. The inside corner of the string lines will be the post location.

**2**

Mark out the location of bolt down brackets.

**3**

Using the 5/32" masonry drill bit included in your bolt down bracket kit, drill 3" deep holes to allow installation of 2 3/4" concrete screws included in your kit.

**4**

Proceed to install three 2 3/4" concrete screws into the bottom base of the bolt down bracket.

**Please Note:**

Concrete patios generally have sloped surface for water run-off. If this is the case, when you secure the bolt down bracket to the concrete, the bracket may be at an angle. This can be corrected for level using galvanized steel washers (not provided), acting as shims underneath the base to level - **VERY IMPORTANT OR PERGOLA BEAMS AND RAFTERS WILL NOT BE LEVEL.**

**5**

With the four post brackets installed plumb, proceed to set the 4x4 wood post in place. Secure using the same concrete screws included in the kit. Repeat for all 4 posts. - **NOTE: WOOD POST POST LENGTH NEEDS TO BE 4' LONG FOR A PERGOLA, OR AS HIGH AS THE BOTTOM RAIL WILL PERMIT FOR AN ARBOR.**

**6**

In order to create a snug fit between the wood posts and the inner cavity of the vinyl posts, it will be necessary to "build out" the 4x4 posts near the bottom and the top using the 1/2"x4"x12" shims. Follow instructions as illustrated.

**7**

Using a step ladder, guide the bottom vinyl columns over the wood 4x4 posts.

**8**

Proceed with assembling and installing your pergola or arbor.

